

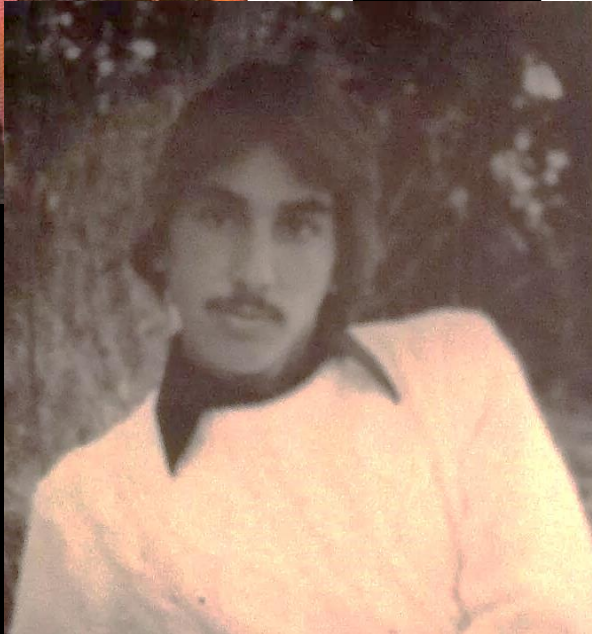
# **IP Readiness and Disaster Recover**

**Chris Doyle  
Panasonic Corp.**

A decorative graphic consisting of several parallel white lines of varying lengths, slanted upwards from left to right, located in the bottom right corner of the slide.



# 1986



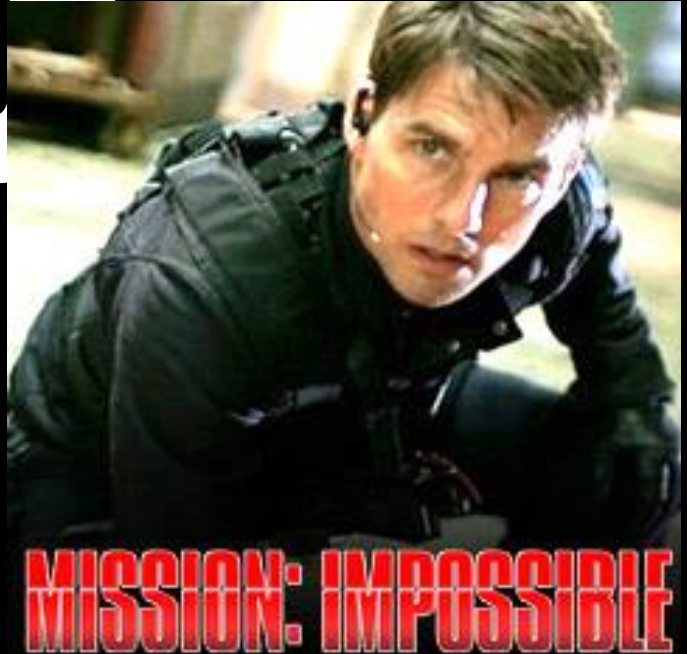






**\$1.22**

**1996**









2006



UNL  
273<sup>9</sup>/<sub>10</sub>

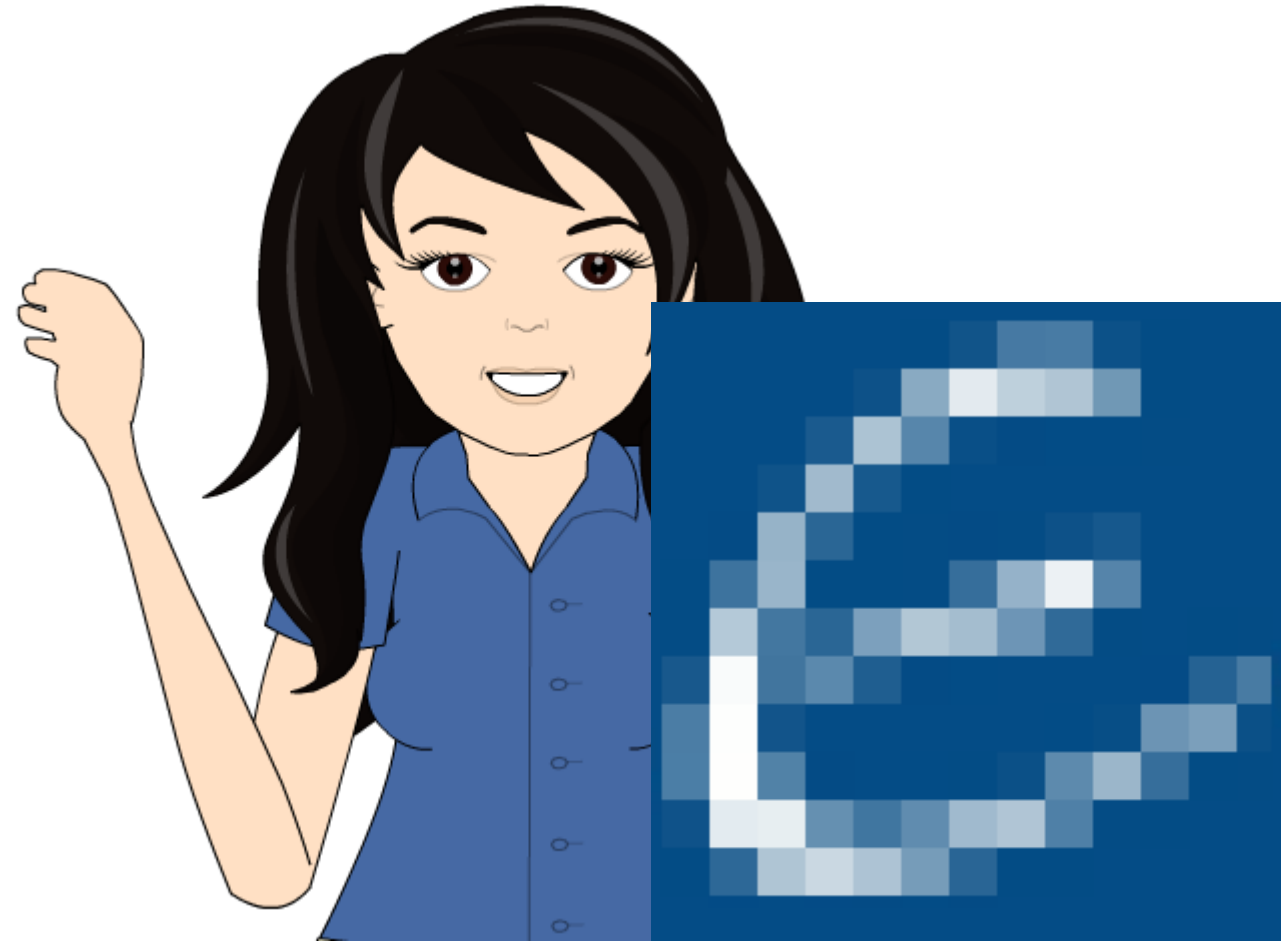


ANDROID

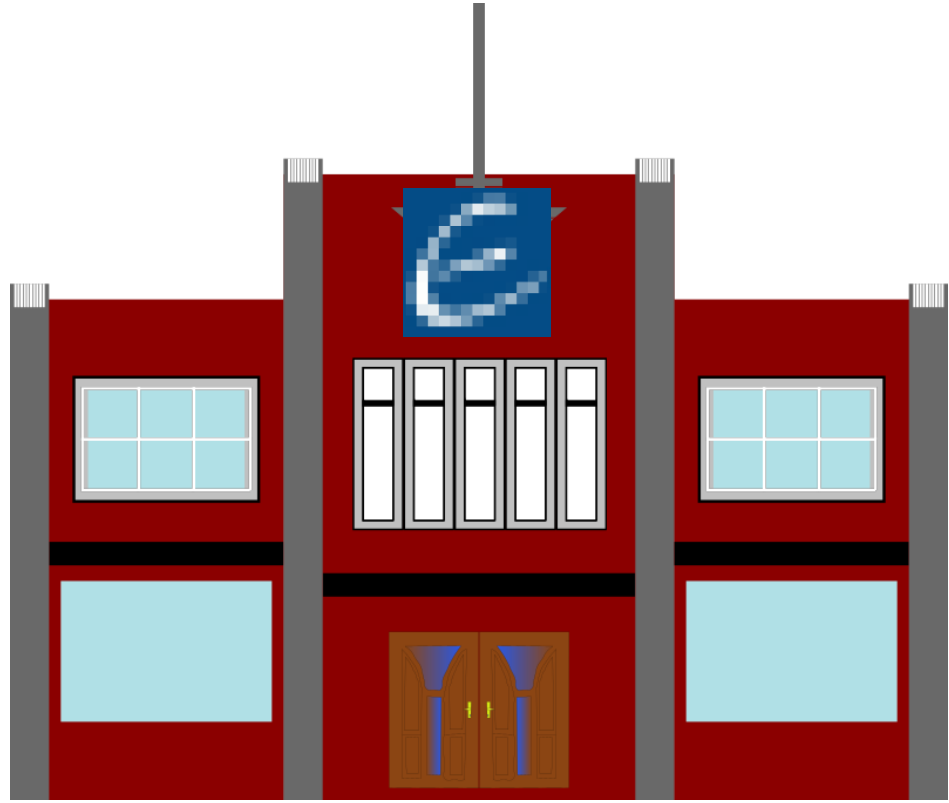








TERESA







**Hosted Voice**



**Premis-Based**



**Hosted/Prem  
Hybrid**

**Infrastructure**

**Bandwidth**

**Digital vs. IP LINES**

**Digital vs. IP PHONES**

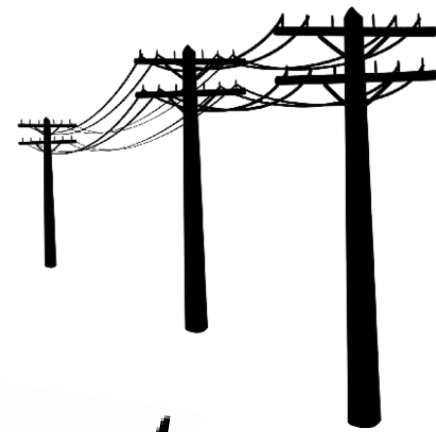
**Security**

**Disaster Recovery**

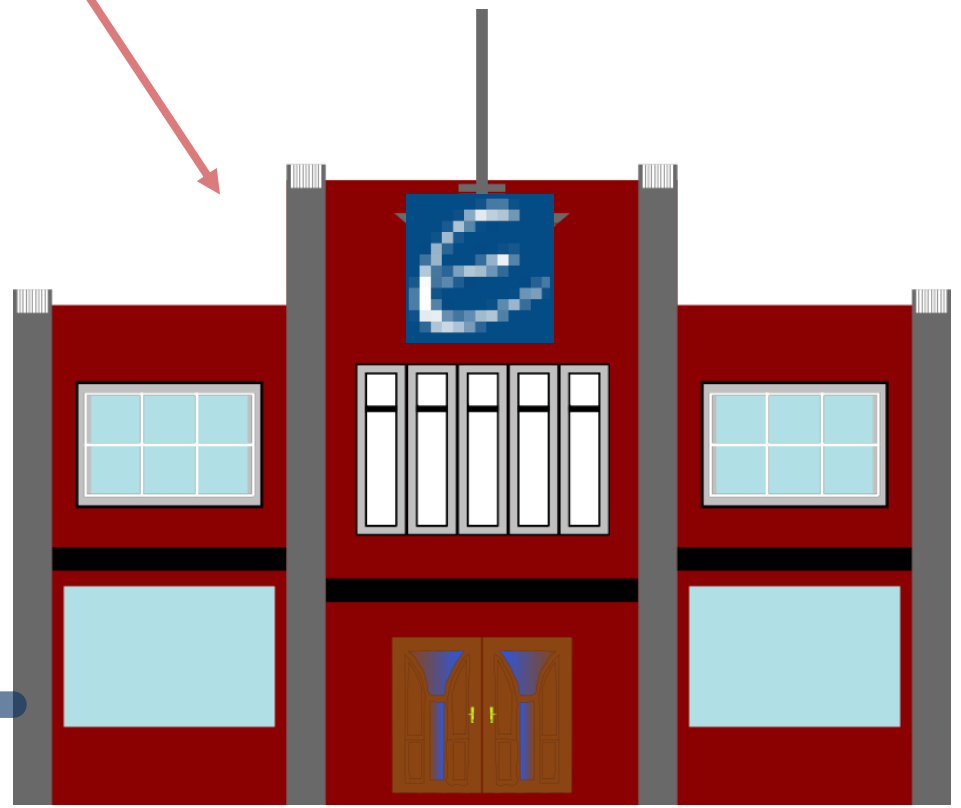
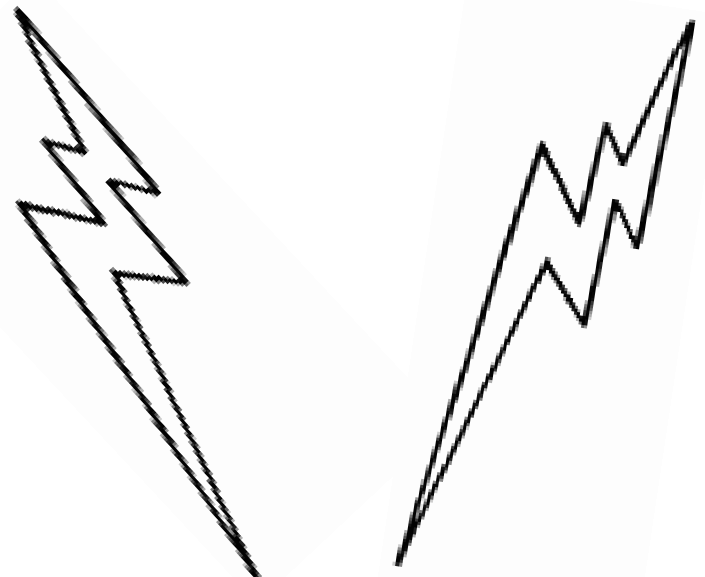




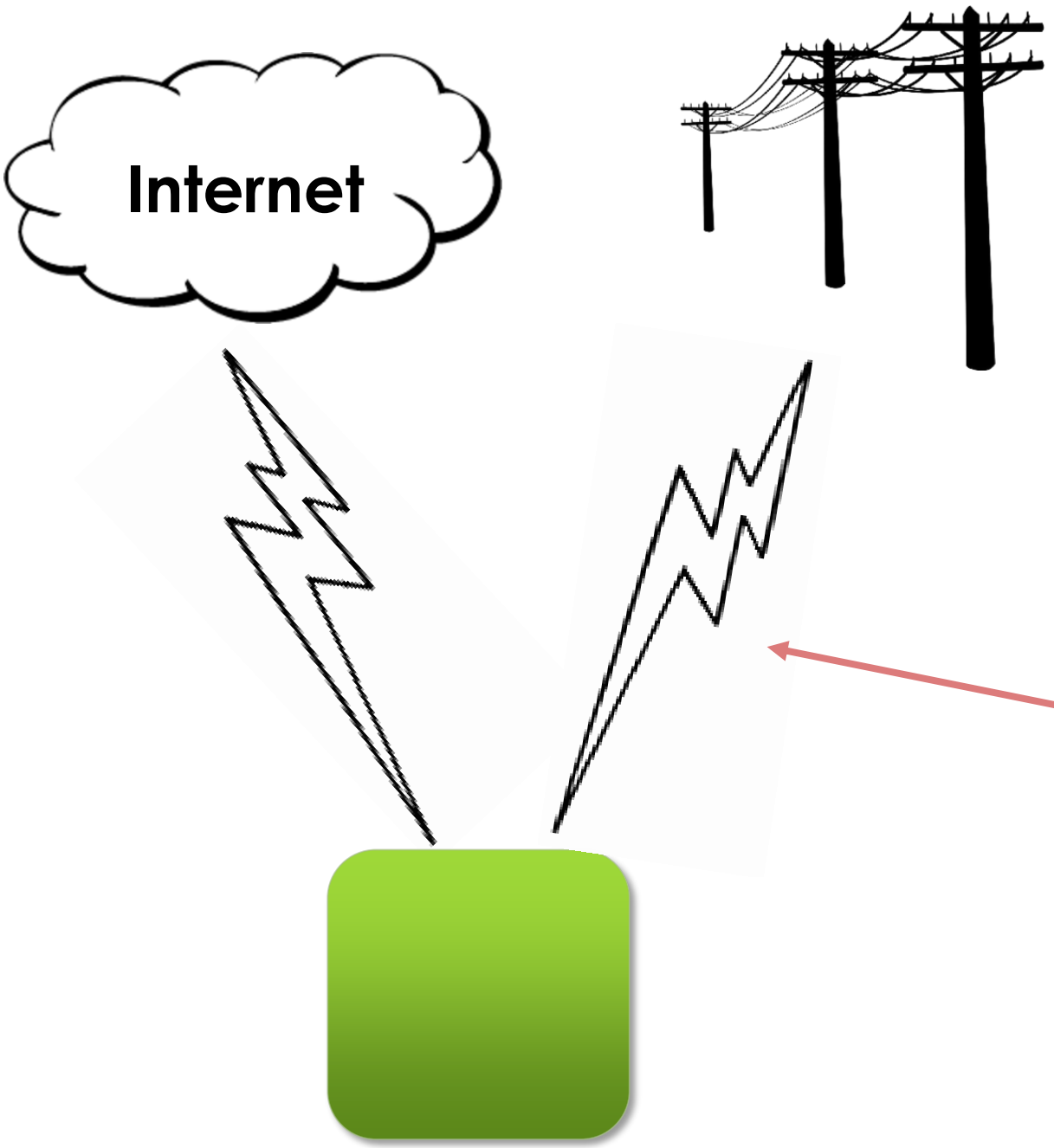
# Infrastructure



- CAT 5E
- Single Cable to Desktop?
- Segmented Network?



# Bandwidth



- **84K per call at G.711**
- **Using Public Internet**
- **Analog / Digital / SIP**



# Digital vs. IP

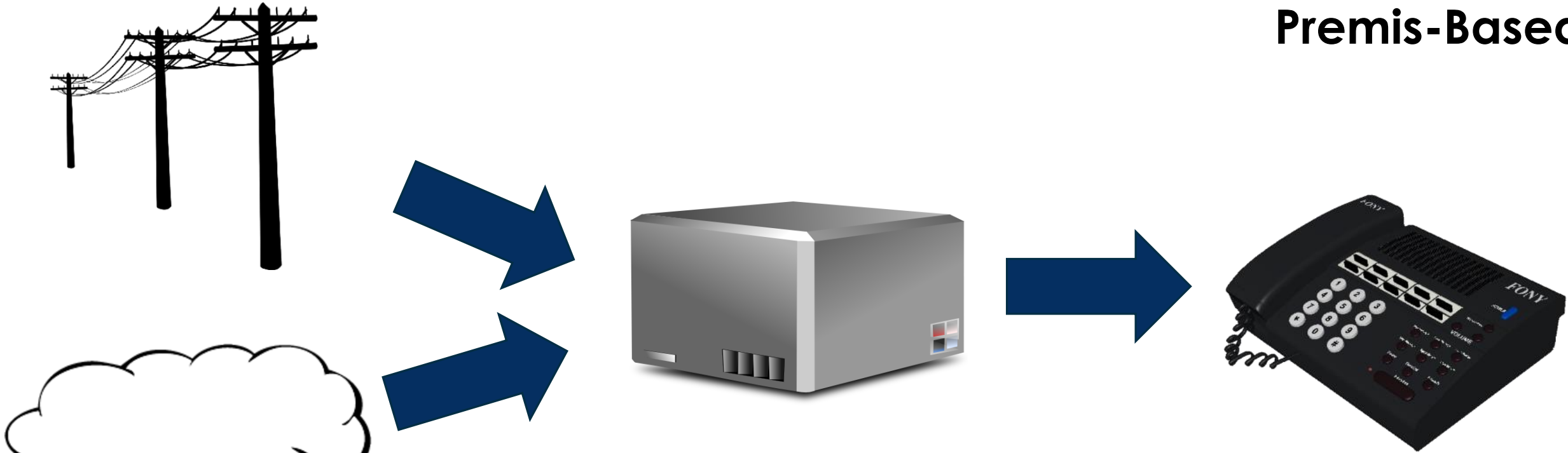
## Hosted Voice



- ✓ **Strictly an IP Solution**
- ✓ **Need good broadband**
- ✓ **Uses public Internet**
- ✓ **SIP phones ONLY**
- ✓ **Monthly service charge per phone**

# Digital vs. IP

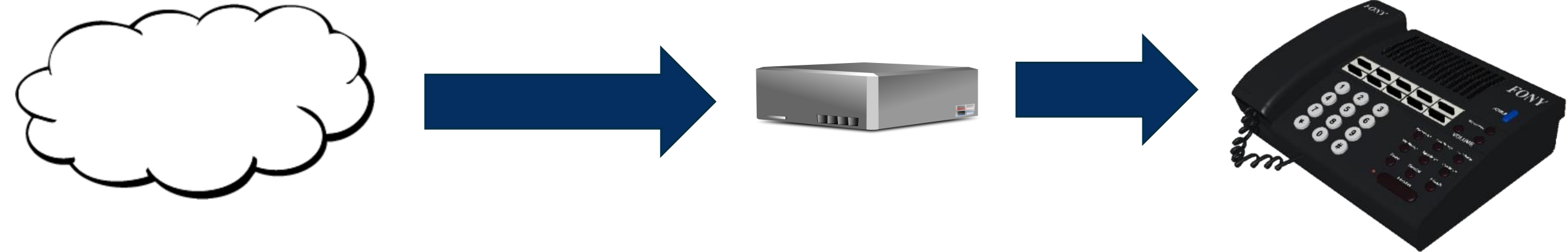
## Premis-Based



- ✓ Can use IP or Traditional lines in
- ✓ Premis-based equipment
- ✓ Can use IP or Traditional phones
- ✓ Can take advantage of SIP cost savings
- ✓ One-time equipment fee and monthly service

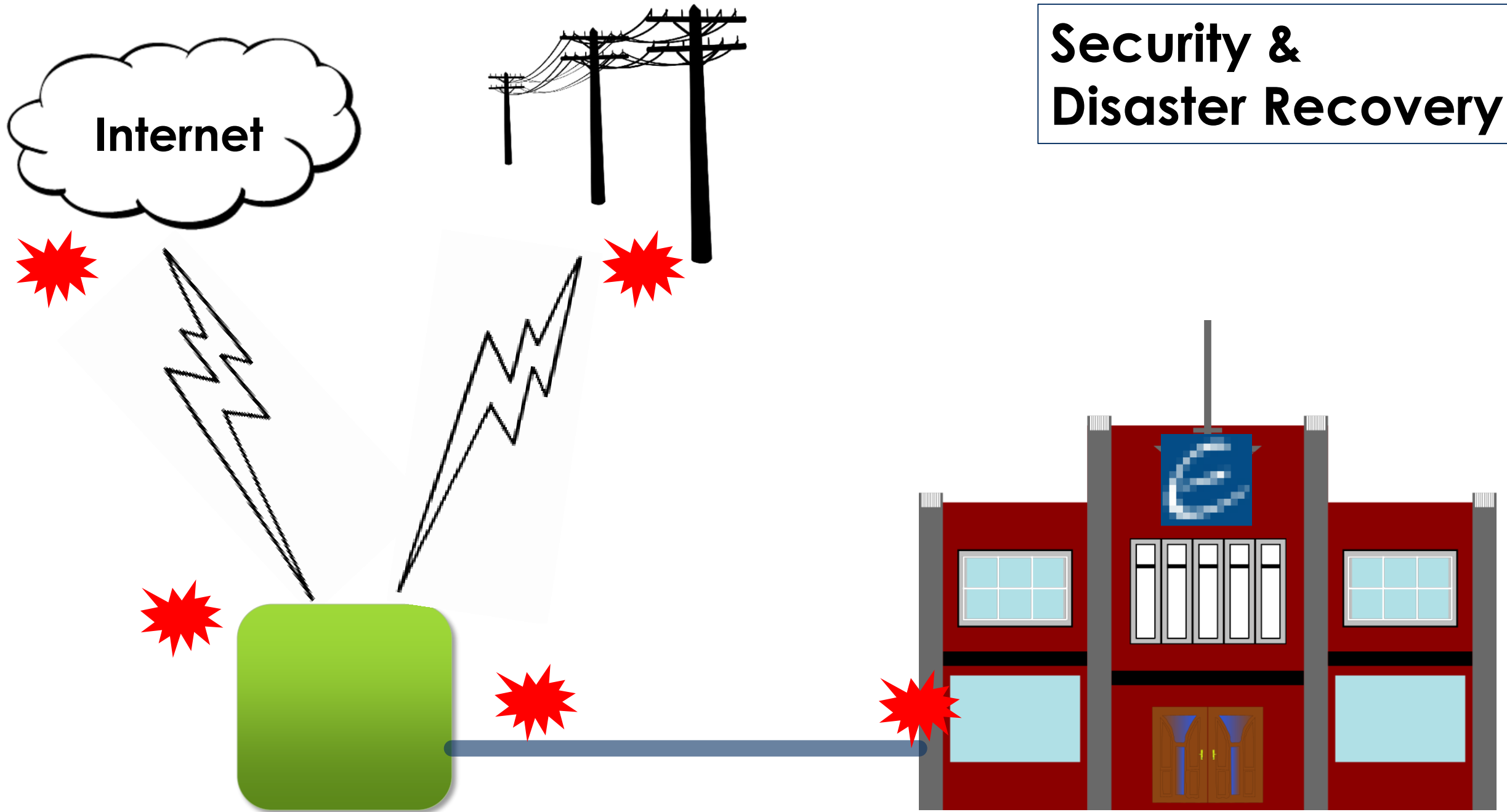
# Digital vs. IP

Hosted/Prem  
Hybrid



- ✓ **Strictly an IP Solution**
- ✓ **Localized equipment but not a “Phone System”**
- ✓ **SIP Phones only**
- ✓ **Must use provider phone service**
- ✓ **One-time equipment fee and monthly service**

# Security & Disaster Recovery







**Infrastructure**

**Bandwidth**

**Digital vs. IP LINES**

**Digital vs. IP PHONES**

**Security**

**Disaster Recovery**

THANK  
YOU!

